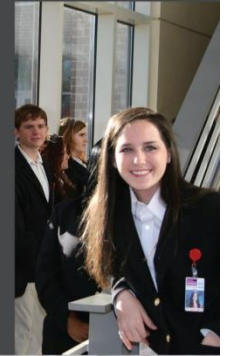


imagine create REALIZE mississippi school of the arts

ms is
totally
awesome!

dance
literary
theatre
visual
vocal
media



ms a

601-823-1300

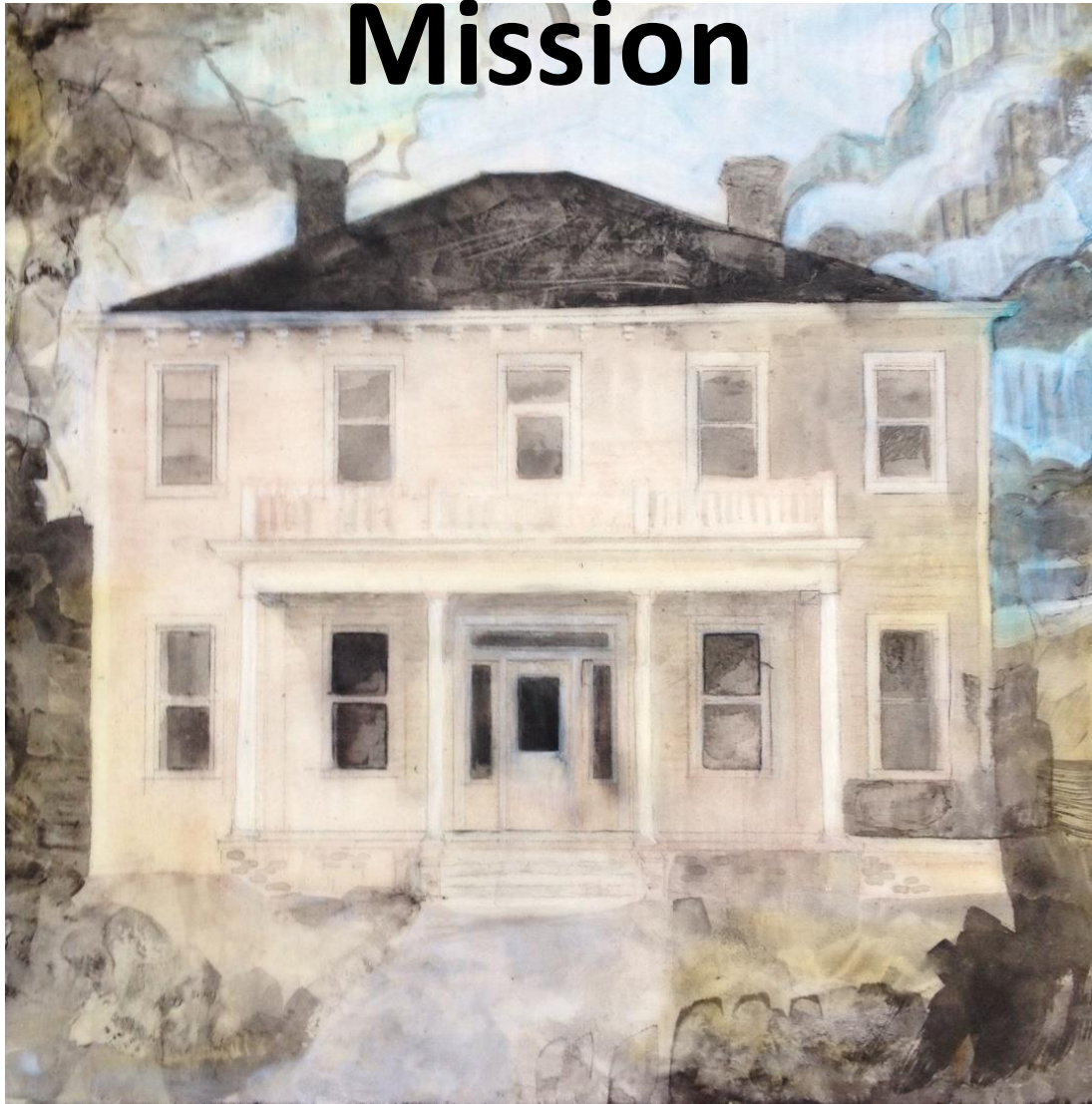
www.msabrookhaven.org



arts schools network
exemplary school
2017 - 2019



Mission



To provide a challenging arts education for artistically gifted Mississippi students in a residential learning environment that promotes honor, integrity, service, and life-long learning.

Vision



At the Mississippi School of the Arts, we envision a challenging, dynamic, supportive community of diverse learners where artists imagine, create, and realize a better world in which to live and work.

Campus Overview

- In 1999, House Bill 706 founded the Mississippi School of the Arts as a statewide residential school that provides advanced programs of study in dance, literary art, media art, theatre, visual art and vocal music for artistically gifted eleventh and twelfth grade students. Instrumental Music is a program to be added in future years
- The Mississippi School of the Arts is located on the historic Whitworth College Campus
- Mississippi Landmark and National Register of Historic Places
- Students apply to audition in their tenth grade year. If they meet criteria, they are invited to audition at MSA through a rigorous process

Governance and Funding

- MSA is governed by the Mississippi Department of Education as a state special school with oversight from the State Board of Education.
- Funding is provided as a line item from the budget of the Mississippi Department of Education as legislated each year.



Operations

- 24/7 for 10 months a year
- 2 go home weekends per month
- 184 days including 3 Saturdays
- 3 days of orientation
- 8am-4:57pm Class Schedule
- Curfew is 10pm on the floor during the week; 12pm on weekends
- Night activities include: rehearsals, studio hours, clubs, meetings, events, and social activities
- Students are given privilege plans dictating their free time and checkout privileges



FAQ

1. What is the school day like at MSA?

- The school day schedule at MSA is more like that of a college than a high school. The arts classes are at an advanced level and require dedication to study. Late afternoon classes may be scheduled. MSA operates on a schedule consisting of five blocks. You may have an off period during the day.

2. Is it possible to take classes in art areas other than my major discipline?

- Taking classes outside of your discipline is possible if your schedule permits it. The better prepared you are in meeting high school graduation requirements before you come to MSA, the greater your chances of taking art courses in other disciplines.

3. What extracurricular activities are available?

- Students may also participate in some sports and other activities at Brookhaven High School, as schedules allow. Residential Life experiences include dances, parties, movie nights, open mic nights and visits to exhibits, performances and plays.

4. What non-arts courses are taught?

- MSA offers a variety of courses in the arts and humanities. Math, science and some foreign language courses may be taken at Brookhaven High School, six blocks north of the MSA campus. A variety of courses are available online.

5. What if there is no arts teacher at my school to complete the recommendation form?

- If there is no teacher at your school who has taught you in your arts discipline, you may ask a private instructor or someone who has worked with you in your discipline to complete the Arts Teacher Recommendation.

FAQ

6. How are students supervised on campus?

- The safety of our students is very important to us. There is 24-hour video surveillance on halls, common areas, and campus grounds. Campus security officers are certified law enforcement who are stationed in the Student Life Center and man the campus 24 hours per day. Hall doors are alarmed at night and the Director of Residential Life, Assistant Director and Resident Counselors live in the Student Life Center.

7. Do I have to declare a discipline of study?

- Yes. Our programs of study are dance, literary arts, media arts, theatre, visual arts and vocal music. You may apply to three arts disciplines. If accepted, MSA works with students to declare a discipline.

8. How hard is it to get into MSA?

- MSA has a competitive admissions process. We do not have a quota of students to accept each year. We are looking for motivated, self-disciplined students who are enthusiastic about the arts. Our arts assessors, who are responsible for assessing portfolios and auditions, are trained to identify potential for learning in a specific arts discipline as well as demonstrated accomplishments. We have accepted some students with years of experience and some students with no formal classroom training in their discipline. Some students have natural artistic ability, which we hope to cultivate in our unique setting.

9. Do I have to take courses at Brookhaven High School?

- No. Students may take some courses at BHS (math, science and some foreign language). Most English and social studies courses are taught at MSA in addition to arts courses. Online instruction is available through Mississippi Virtual Public Schools.

10. Costs to Attend MSA

- Students pay no tuition at MSA. There is a Room & Board fee of \$1000 per year to assist with the expenses of housing a student. Legislative appropriations support most of the costs for attendance at MSA. Parents will also be responsible for expenses such as incidental fees, laundry, spending money and for individual expenses. Fees vary according to arts disciplines. A fee schedule is provided in the student handbook.

Application and Audition FAQ

Application Review

- The admissions department at the Mississippi School of the Arts looks at each application thoroughly. A combination of recommendations, student experience, transcripts, GPA and student essay information is reviewed and scored by the admissions department. After review of the application materials, the admissions department contacts each student about their status for the on-site auditions.

Criteria for Admission

- Be a resident of Mississippi;
- Be a current tenth grader with a minimum of 12 Carnegie units of study upon the completion of the tenth grade year;
 - English—2 credits (English I and II),
 - Mathematics—2 credits (Including Algebra I),
 - Physical Education—0.5 credit,
 - Science—2 credits (Biology and Chemistry recommended),
 - Social Studies—2 credits (Including World History, World Geography, and Mississippi Studies),
 - Health—0.5 credit,
 - Business and Technology—1 credit (in accordance with Appendix A of MS Public School Accountability Standards) and
 - Foreign Language—Students are encouraged to complete at least 1 unit of the 2 units required for college admission.
- Demonstrate artistic achievement in the visual, performing or literary arts;*
- Submit a completed application packet; • Audition and/or present a portfolio for review on-site (by invitation);
- Complete an on-site interview (by invitation);
- Submit an ACT score (no minimum)
- Have an overall high school grade point average of 2.5 (Schools must include all visual and performing arts course grades in calculating overall GPA).

If you have questions about the process, you may contact the Recruiting and Admissions Department at:
admissions@mdek12.org or by phone at 601.823.1300

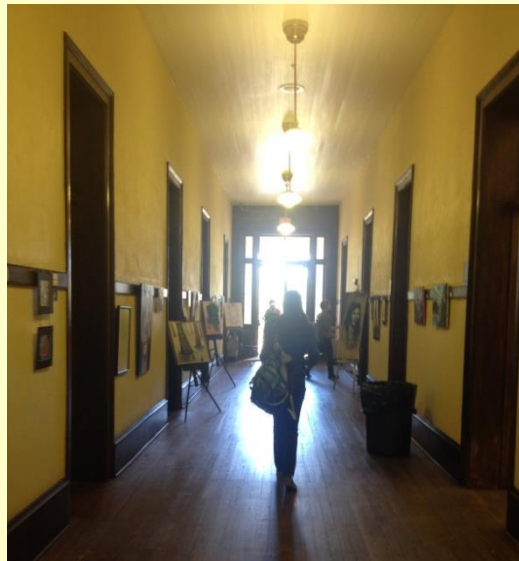
Audition Process



- February 1 – Application Deadline
 - Requirements
 - 2.5 GPA and complete application
- Spring – Auditions
 - Interview (Residence Life and Academic Faculty)
 - On site prompt (adjudicated by 3 artists)
 - Prepared work (adjudicated by 3 artists)
 - Recommendations (Counselor/Principal & 2 teachers)
 - Self Description (submitted with application)

Curriculum and Instruction

- Lesson plans weekly and Syllabus/course
- Small class sizes (average 25 or less/class – 11:1 Student to teacher ratio)
- Non-traditional classroom spaces
- Collaborative curriculum
- 3 hours minimum/day in arts instruction
- MS College and Career Ready & the National Core Arts Standards



Community Involvement/Volunteerism

MS Blood Services, Brookhaven
Animal Rescue League, O
Foundation, Master Gardeners,
Brookhaven Elementary School,
Lions Club, MS Children's Home,
Children's Hospital, area churches,
Boys and Girls Club



College and Career Readiness

- Senior Seminar
- College Fair/Portfolio Day
- Junior Meetings
- Life Skills
- 21st Century Skills
- AP & Dual Credit
- MS Scholars
- Internships/TA positions
- Collegiate Level Arts Programs



Students literally run the show!

All Arts Disciplines require comprehensive study of not only the creative process, but also production, equipment, management, and operations of events.

- Examples: Stage Management, Public Relations/Marketing, Lights/Sound Operation, Costume Design, Props/Costume Management, House Management, Curation, Casting, Directing, Choreography, Education

Partnerships

- Brookhaven High School Partnership
- FAFSA Day/Educational Services Foundation
- Co-Lin Community College
- No Place for Hate
- Chamber of Commerce
- Brookhaven Trust
- MS Arts Commission
- Arts School Network
- MS Alliance for Arts Ed



Outreach and Opportunities

- MSA Summer Camp – 2019 will be sixth year
- Performances
- Host community events with state agencies
- Summer Intensives



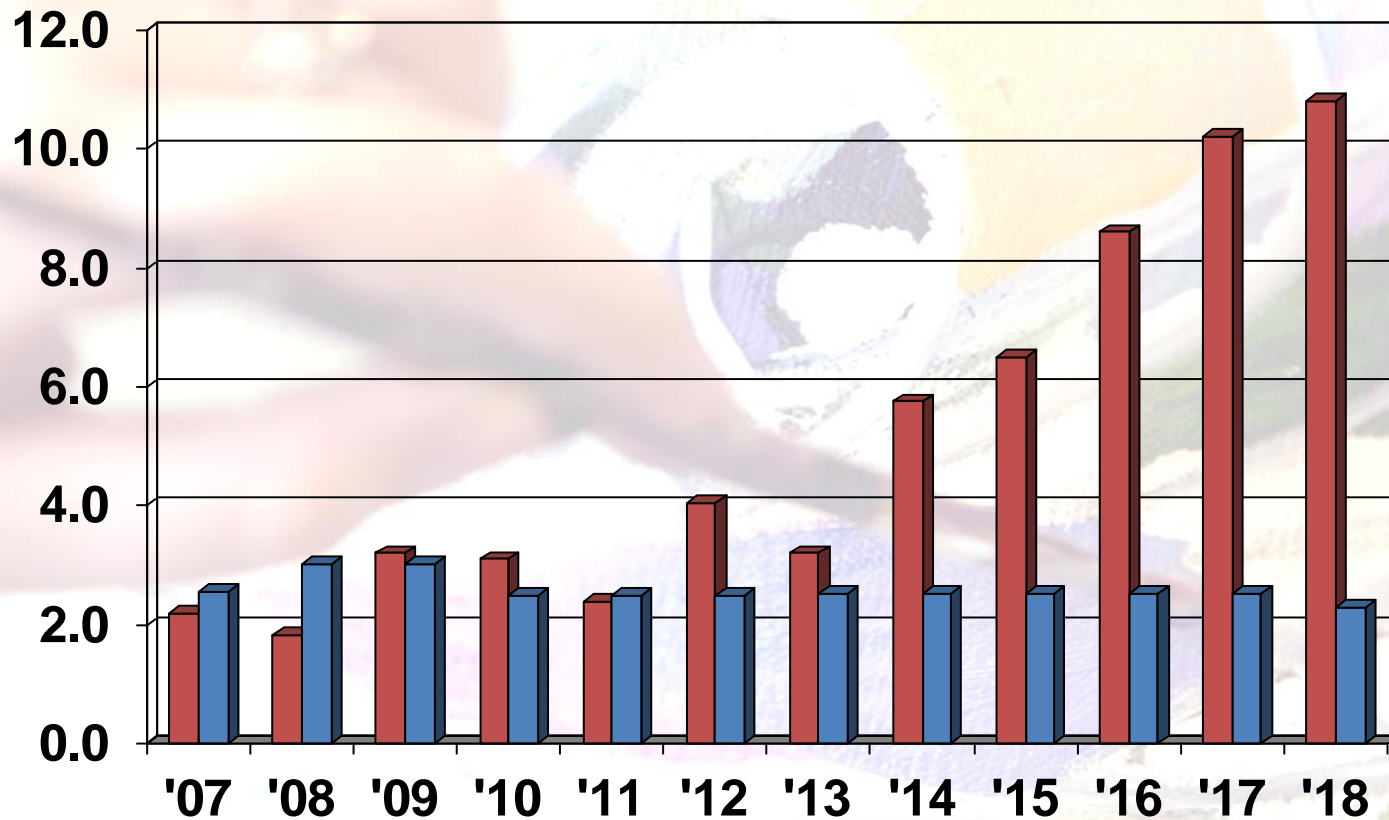
MSA's Student Body

- MSA students currently enrolled represent 48 MS counties.
- Students have been enrolled from every congressional district annually.
- 38% of 2018 graduates are Mississippi Scholars.
- In 2018, 44% of students are at or below the federal poverty level.
- Students contribute an average of 105 hours of community service a month.

First-Class Faculty and Staff

- **MSA teachers**
 - **100% are State certified**
 - **100% have advanced degrees (Ph.D. or Masters) in their field**
- **MSA employees**
 - **Commute from 11 MS counties**
 - **31 Full time employees**
 - **27 Part time employees**
 - **14 employees work year round**

Scholarship Offers Greater than MSA's Annual Budget!



Scholarships

Annual Budget

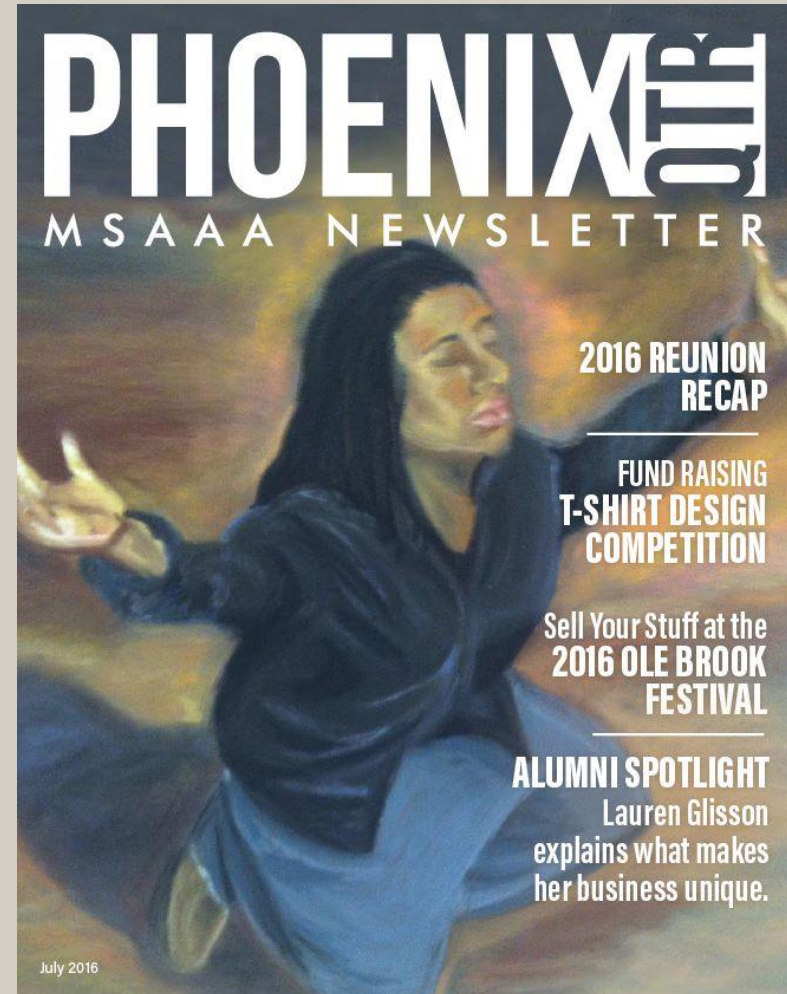
Parent Network

- **Support organization**
 - Student activities
 - Fundraising
 - Awareness
 - Staff Support
 - Committee Support



MSA Alumni Association

- Support Organization
 - Reunions
 - Newsletters
 - Alumni Networking
 - Whitworth College Alumni
 - Rising Phoenix Scholarship



MSA Foundation

- The MSA Foundation is a private, non-profit 501(c)(3) agency with a purpose to support the mission of the MS School of the Arts
- Assists with fundraising, grants, community support, awareness, and student scholarships
- HUD, MAC, SAF, etc.



Mississippi's Best and Brightest Arts Students

- Geographically, the student body represents the entire State of Mississippi
- 2018 Average ACT scores 22.5, higher than State average
- ACT sites MSA is 95% college readiness in all areas of study
- Over 65% of graduates remain in Mississippi

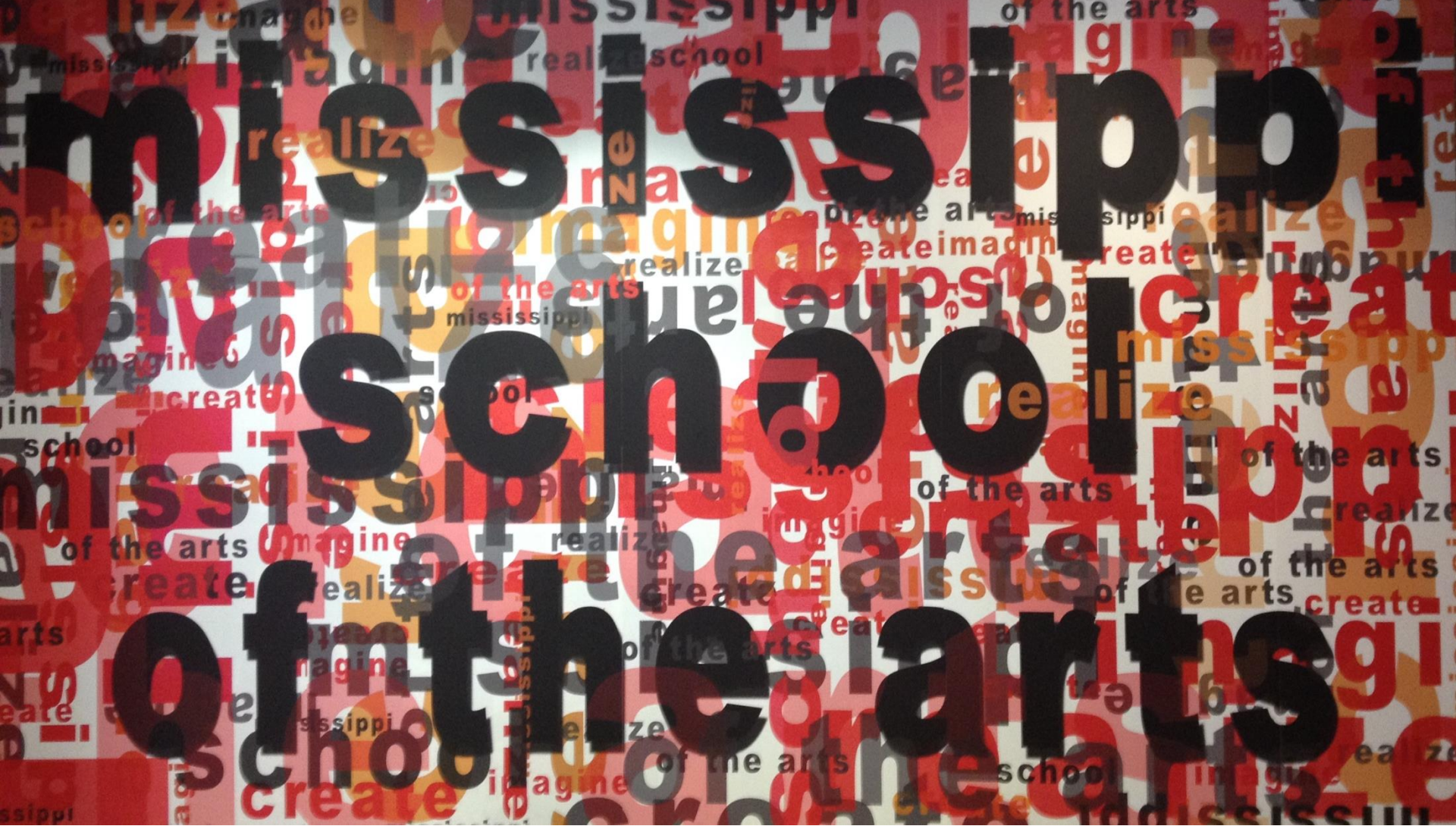


Accolades

- **\$10.8 Million** in scholarship offers for the class of 2018
- **Scholastic Arts & Writing Awards** – American Voices Awards in Visual and Literary – 2 of 5 students recognized from MSA in each discipline multiple years; Best in Teen Writing; consistently receives the most awards in Mississippi
- Dance Department performs at Universities throughout Mississippi each year
- Visual Department invited to exhibit at **Ogden Museum of Southern Art** in January 2017
- Chorale has performed at **Carnegie Hall** six times and **Avery Fischer Hall at Lincoln Center** in New York City – February 2018 performance
- Chorale consistently receives superior ratings at district and state festivals
- MSA students are finalists and winners at state and regional **National Association of Teachers of Singing** competitions
- 100% of arts discipline teachers are practicing artists
- MSA alumni have been seen on **The Voice, American Idol, the X Factor** and movies; commissioned artists internationally; working professionally in regional theatres; **Fulbright Scholars**; most notably Jasmine Murray, recently signed with William Morris Talent Agency as a recording artist, Miss Mississippi 2014 and top 10 Miss America, top 13 contestant on American Idol in 2009.

Where do they go from here?

- **All MS Public and Private Colleges and Universities**
- American Academy of Dramatic Arts, CA & NY
- American Music and Dramatic Academy, CA
- Art Institute of Chicago
- Cal Arts
- Clark Atlanta University, GA
- Columbia College, IL
- Dartmouth
- DePaul University
- Emerson College
- Fashion Institute of Technology, CA
- Florida State University
- Howard University
- Kings College, NYC
- Loyola University, LA
- Maryland Institute College of Art
- Memphis College of Art
- New York University
- Pace University, NY
- Rochester Institute of Technology
- Rocky Mountain School of Design
- Savannah College of Art and Design
- Sewanee: University of the South
- Shenandoah University
- Spellman University
- Texas Christian University
- University of Alabama
- University of the Arts, PA
- University of California, Berkley
- University of Illinois – Urbana
- University of New Orleans
- University of South Alabama
- Virginia School of the Arts
- Wabash University
- Watkins College of Art



Imagine. Create. Realize.